



*Louisiana State University*  
AND AGRICULTURAL & MECHANICAL COLLEGE





# Program

## INTRODUCTION OF ELIZABETH DOLE

*Former President of the American Red Cross*

Dr. Mark A. Emmert

*Chancellor, Louisiana State University  
and Agricultural & Mechanical College*

## INVOCATION

Reverend Chris Andrews

*Senior Minister, First United Methodist Church*

## NATIONAL ANTHEM\*

Robert Grayson

*Edith Killgore Kirkpatrick School of Music Endowed Professor  
and*

2d Marine Division Band

Chief Warrant Officer-3 Robert A. Estep

## LSU ALMA MATER

Robert Grayson

and

LSU Tiger Band

Director Frank B. Wickes

## INTRODUCTION OF PLATFORM GUESTS

Chancellor Mark A. Emmert

## WELCOME

Chancellor Mark A. Emmert

*Diamond  
Jubilee  
Celebration*

FREDERIC  
S. WEIS



## REMARKS

Dr. William L. Jenkins  
*President, LSU System*

Ronald R. "Ronnie" Anderson  
*Chairman, Board of Supervisors, LSU System*

M. J. "Mike" Foster, Jr.  
*Governor, State of Louisiana*

## RECOGNITION OF DISTINGUISHED GUESTS

### ARMED FORCES MEDLEY

2d Marine Division Band

### INTRODUCTION OF PRINCIPAL SPEAKER

Chancellor Mark A. Emmert

### ELIZABETH DOLE

### MILITARY SALUTE\*

*As a Salute to Those Killed or Missing in Action or Designated as Prisoners of War*

Louisiana National Guard

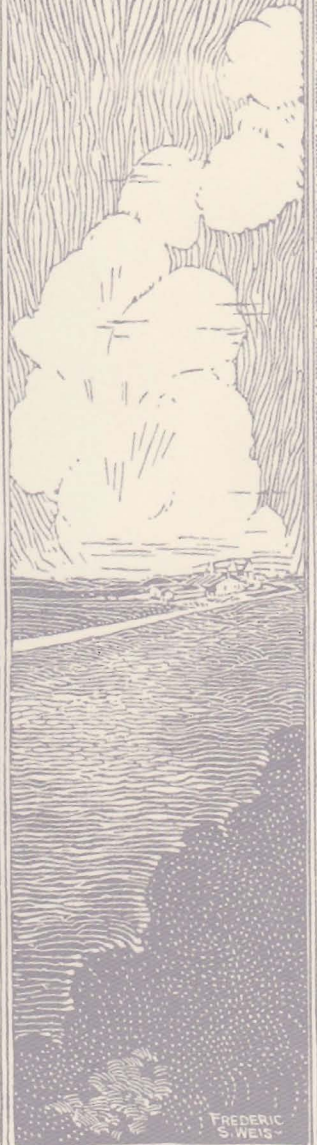
### "GOD BLESS THE USA"

Robert Grayson  
and  
2d Marine Division Band

### CONCLUSION

Chancellor Mark A. Emmert

*\* Audience please stand*



*Monday, April 30, 2001*

*2:30 p.m.*

LSU PARADE GROUND  
MEMORIAL TOWER DRIVE  
BATON ROUGE, LOUISIANA



## SPECIAL THANKS TO

---

2d Marine Division, Camp LeJeune, North Carolina, Major General Ronald Richard, Commanding General

Louisiana National Guard, Major General Bennett C. Landreneau, The Adjutant General

2d Marine Division Band, Chief Warrant Officer-3, Robert A. Estep

Lodwick M. Cook

Louisiana State University Tiger Marching Band, Frank B. Wickes, Director

Louisiana State University Cadet Corps

Louisiana State University Air Force Angel Flight

Louisiana State University Army Scotch Guard

Louisiana State University Department of Military Science

Louisiana State University Department of Aerospace Studies

Louisiana State University Department of Facility Services

Louisiana State University Office of Parking, Traffic, & Transportation

Louisiana State University Diamond Jubilee Celebration Committee

Louisiana State University Office of University Relations

Louisiana State University Alumni Association

Louisiana State University Police Department

Abita Springs Water Company, Incorporated

Robinson Brothers Lincoln-Mercury

The artwork that appears in this program was reproduced from the original  
1926 Dedication booklet.

